



ANNUAL REPORT 2023-2024

Aratoi Wairarapa Museum of Art and History

TABLE OF CONTENTS

VISION & MISSION	3
YEAR IN REVIEW, ARATOI CHAIR & DIRECTOR	4
KEY RESULT AREAS 2023-24	11
Service One: Collections _____	11
Service Two: Exhibitions _____	14
Service Three: Access & Engagement _____	18
ARATOI IN NUMBERS	19
OUR PEOPLE	20
ACKNOWLEDGEMENTS	22
AUDITED PERFORMANCE REPORT	24

VISION & MISSION

Our **Vision** is to be one of the best regional art galleries and museums in Aotearoa New Zealand.

Our **Mission** is to provide high quality experiences of art, history and culture in the Wairarapa.

Guiding principles (Ngā mātāpono)

- Excellence – Te Hiranga
- Professionalism – Te Ngaiotanga
- Innovation – Te Auahatanga

Core values (Ngā uara)

- Integrity – Te Mana Tangata
- Welcoming inclusiveness – Te Whai Wāhitanga
- Respect – Te Whakaute

Aratoi is the place from which history and stories are told and it is a community forum for learning, understanding, and participation in art, history and culture.

Aratoi recognises Rangitāne o Wairarapa and Ngāti Kahungunu ki Wairarapa as having mana whenua within the rohe [region] of Wairarapa.

Overall Outcomes

- Collect, hold, preserve and exhibit taonga Māori, heritage objects and artworks to the very highest museum standards
- The community values Aratoi as a museum and for its events and activities
- People of the Wairarapa and visitors to the region enjoy access to and are stimulated by exhibitions, events and activities
- Aratoi values and engages with our supporting partners
- The organisation is artistically and financially well managed

YEAR IN REVIEW

Aratoi Chair & Director

2024 was a year of contrasts. We saw some of the most inspiring art, taonga, and stories from our region and beyond on display while also facing challenges and big changes.



Without a doubt the year has been a busy and rewarding one for Aratoi, particularly in terms of the immense support we have received from our community. We have continued to focus our programme on our local makers and histories, while developing and bringing in exhibitions and programmes with nationally and internationally recognised artists, including Rita Angus, Rebecca Steedman, Jenny Keate, Lisa Chandler, Leanne Sheather, and Dwayne Duthie. During the year, we actively included over 1000 local artists or artists that whakapapa to the Wairarapa region in our programmes and activities.

One of the local exhibitions that proved to be huge hit was Natasha Ratuva's remarkable exhibition *Buiniga* which saw her present masi artworks that reinterpret

traditional patterns from Fijian masi (iTaukei barkcloth) and kuta (woven pond reeds) into contemporary compositions with the buiniga, an iTaukei women's traditional hair practice as the central theme. Other highlights were Jane Sinclair's *Quiet Observations*, the Wairarapa Camera Club's *Reflecting on Our Place* and the biennial favourite the Wairarapa Art Review. We are immensely proud of our artists and the incredible work they do.

One of our aims for the year was to bring more families to the museum through our programming and we are pleased to see that bear fruit with the exhibitions *Our Moon: Then, Now & Beyond* and *Pastimes: Games and Toys* that were developed with families and rangatahi in mind.



One of the big stories to come out of Aratoi's year is the launch of our Collection online. It has been our goal to increase the use and accessibility of the collection to our community and we are incredibly proud to have launched this website. Over 2,000 artworks and objects are now available to be searched at <https://collection.aratoi.org.nz>. In making this information available to the public we are hopefully that new life will be brought to the collection.



We have been excited to showcase the collection in several major exhibitions. *Light and Space: Sculpture from the Collection* saw us celebrating the strong history of sculpture in the Wairarapa and brought together major works from the collection including Barbara Hepworth's *Forms in Movement – Galliard* and the return of Rhondda Greig's *Raphael at Matarawa* which was on long term loan to the hospital for many years. *In Recognition* highlighted collection objects that were presented, gifted or awarded to people in recognition of their achievements and service, while the foyer and vestibule walls saw a series of exhibitions that celebrated artworks, taonga, and objects from the collection.

We were proud to work with our colleagues at Wairarapa Library Services to launch the *Pop-Up Museum*, which has seen objects from Aratoi's collection go on display in libraries across the region. This initiative brings our unique collection and stories out

into the community, and we would like to thank Madeleine Slavik from Wairarapa Library Services for her work supporting this project.

Aratoi was pleased to support Ngāti Kahungunu ki Wairarapa and Rangitāne o Wairarapa in bringing tūpuna portraits to Papawai marae as part of the event to mark the giving back of the Wairarapa Moana to her people. We were also proud to work with both iwi and Cobblestones to support the repatriation of the waka tiwai to Aotea Utanganui - Museum of South Taranaki in Patea. We cherish the relationship we have with our local iwi and thank them for the guidance and mahi they do for arts, culture and heritage in the Wairarapa.

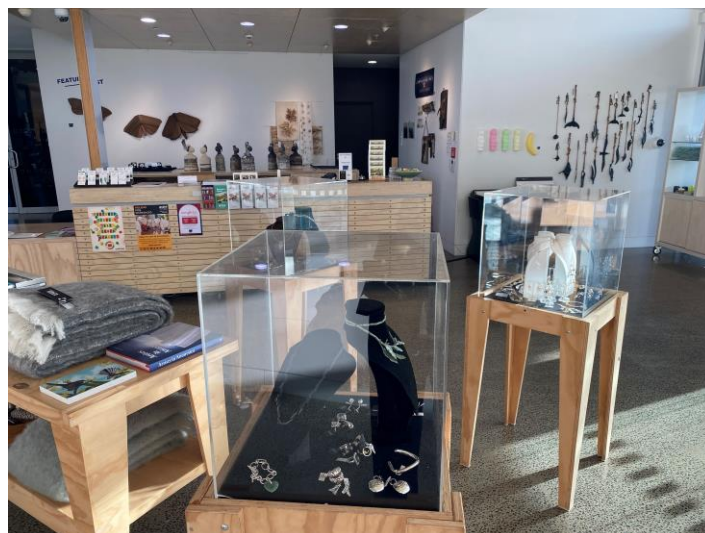


Our educator, Natasha Priddle, began work at Aratoi in June 2023 and brought with her a true passion for connecting rangatahi with art and heritage. Her programmes have proven to be a hit with our schools and early learning centres and she is a fantastic addition to the team. To support her diverse and vibrant programme we have revamped the Wesley Wing stage to act as an education space in which rangatahi from across the region can make and create freely. This dedicated space has been essential to the development of the programme, and we want to thank Tararua Builders Ltd and Harrisons for their generosity in making this work possible.

The tightening economic climate certainly created a challenging environment in

which to work, but with the support of our community we know that Aratoi will be stronger and more resilient as a result. We would like to take this opportunity to thank everyone who contributed and continues to contribute, particularly Trust House who, as one of our major sponsors, provides most of the funding for our exhibition programme. A special mention must be made of our two key stakeholders and supporters, Masterton District Council, who provide the majority of our operational funding and Masterton Trust Lands Trust - the building owner.

Despite ongoing financial constraints, sales and commissions continue to form a vital part of Aratoi's self-generated revenue. Over 35% of Aratoi income was self-generated (i.e. non-Masterton District Council and Masterton Trust Lands Trust funded) through sales, commissions, project funding, donations and sponsorship. The Financial Statements show a deficit for the year of \$68,970. When the non-cash cost of depreciation is removed from the accounting result and the cost of normal capital expenditure items considered, the cash movement for the year from ordinary activities is a deficit of \$25,848.



Long-term planning and foreseeing the longer-term impact of tightening economic conditions on the Museum in terms of income, funding and sponsorship is difficult to

predict. Our organisation will do its utmost to improve the level of funding and projects to ensure a sustainable future for our community museum.

Our visitation numbers have increased by over 5.5% from last year, and Aratoi remains one of Wairarapa's best-loved cultural attractions with a satisfaction rate of 93% (as measured by our annual visitor survey and online ratings). Education and outreach continue to be a critical component of the Museum's work.

We are enormously proud of the way the Museum team worked together this year. We faced and resolved many challenges in fast-moving situations. It is not just the people who make up the staff of the Museum that are important, it is all the people that the Museum touches, the artists, the volunteers, the contractors, the schools, and the visitors that have supported us. Thank you.



We would like to express our sincere appreciation to the Trust Board. The time the Board collectively invests together with their guidance and encouragement is crucial to Aratoi's success. David Moriarty stepped down from his position as Chair of the Aratoi Regional Trust in January 2024. The contribution he has made to Aratoi during his tenure cannot be overstated and we are profoundly grateful for the work he has done for our Museum.

Special thanks must be extended to the Friends of Aratoi, especially Chair Sandra Debney and Deputy Chair Rob Sewell, and the Aratoi Volunteers. We would also like to acknowledge our local iwi and especially thank Rangitāne o Wairarapa Cultural Adviser Mike Kawana and Kaihautu Haami Te Whaiti for their trust, support and contribution of knowledge which is vital to the operation of Aratoi. Thanks also to the artists who have created the artworks that have inspired and challenged us over the last year. Finally, we would like to acknowledge the hard work and dedication of the Aratoi staff who, despite the challenges, have all helped make this a rewarding year for our organisation.

Kia ora rawa atu. Ngā manaakitanga

Wayne Skipage
Chair

Sarah McClintock
Director



KEY RESULT AREAS 2023-24

SERVICE ONE – COLLECTIONS

We will care for our collections. We will research our collections. We will share our collections with communities. We will strategically develop our collections.

Providing access to collections and growing and strengthening its collection is a focus for Aratoi. Access to collections was provided through our exhibitions, our education programme, collection tours and online.

This financial year, Aratoi curated six significant exhibitions showcasing works and objects from the collection: *Light and Space: Sculpture from the Collection*, *Choice: Staff picks from the collection*, *James Bragge: Splendid Scenic Gems*, *In Recognition*, *Whiriwhiri: Taonga from the collection* and *Thresholds*. These exhibitions highlighted a broad array of artworks and objects in Aratoi's collection – from taonga and toi Māori, to photography, natural history, social history, painting, sculpture, and more.



This year we have partnered with Wairarapa Library services to present *Pop-Up Museum* – a series of exhibitions at libraries in South Wairarapa and Carterton that showcase an object from the Aratoi's collection. The exhibitions in Featherston and Greytown have been a huge success, with the Pop-Up Museum coming to Carterton and Martinborough libraries in 2024-2025.

A major feat for 2023-2024 was the launch of the collection online. In May 2024, after months of work, a significant portion of the collection was made available for the public to view and search via our website for the first time. This site will continue to grow and evolve, and we are thrilled to have it as a resource available to the community.

Outward Loans

- Auckland Art Gallery borrowed Robin White's *Summer Grass* (2001) and *Sam's Place, Bottle Creek* (1971) for the major Robin White survey exhibition *Something is happening here*. Loan dates: March 2022 – December 2023. The exhibition opened at Te Papa on 4 June 2022, it then opened 28 October at Auckland Art Gallery Toi o Tāmaki before traveling to Dunedin Public Art Gallery where it opened on 11 March 2023. The exhibition opened Christchurch Art Gallery Te Puna o Waiwhetu on 21 July and closed 5 November 2023.
- John Baxter, *Te Tahua*, 2000, acrylic on wood, on loan to Toi Mahara, Waikanae, for the exhibition *Rua Pōtae*, a retrospective of Baxter's work, 1 June - 11 August 2024.
- 7 tīpuna portraits and Tamahau Mahupuku's chair for display at Papawai Marae for the return of Wairarapa Moana to its people, 29 June 2024.

Acquisitions

- The wedding ensemble of Isla Emily Campbell (1913-2006) of 'Ratanui', Mt Bruce, who married William (Bill) Taylor Rankin (1913-1987) of Pahautea, Featherston at Knox Church, Masterton on 16 July 1938, gift of Alison Henshaw. Includes:
 - wedding dress,
 - slip
 - veil
 - garter
 - stockings
 - shoes
 - three loungewear/nightwear sets from her trousseau
- David Leach (1911-2005), *Bowl*, c.1978, ceramic (porcelain), 100 mm (h x dia), gift of Joan Wooler

- Victoria McIntosh (b.1971), *Burnt... with teapot*, 2016, found objects (burnt wood, metal, Bakelite) 600 x 800mm (h x w), gift of the artist
- Teapot, plain oval shaped teapot with embossed coat of arms and engraved award dedication, Walker & Hall, Sheffield, England, c.1960, silverplate, awarded to L.M.Reeves, First Assistant Greytown Coop Dairy Co. Ltd / Points Prize First Assistant For Cheese Classes / 1962, gift of Helen McKenzie
- Rhondda Greig (b.1940), *Pukeko in Rome*, 1999, charcoal on paper, 1000 x 700 mm (h x w) frame, gift of Virginia and John Horrocks
- Hon. A. W. Hogg writing box / document case, made by Bramah (estb. 1784), circa 1892, leather, wood, lambswool, glass, metal, (incl brass, stainless steel), purchased 2023
- Roof shingle from a home on Manaia Road (relocated from 26 Bannister Street), timber shingle, 1877, wood, 380 x 150 x 5mm mm (l x w x d), gift of Ian Shanks
- Roof shingle from homestead on Matahiwi Road, timber shingle, 1865, wood, 390 x 100 mm (l x w), gift of Nelson Provincial Museum
- Tablecloth, 1880s, linen, 2120 x 1850 mm (h x w), donated by Ainslie Hewton
- Mere pounamu (greenstone hand weapon), donated by Sue Lovelock
- Collection of 4 matau (fish hooks), 3 bone and 1 shell, donated by the Edmonds Family
- Collection of 72 stone flakes, stone, donated by the Edmonds Family
- Collection of 55 obsidian flakes, obsidian, donated by the Edmonds Family
- Collection of 21 moa eggshell fragments, eggshell, donated by the Edmonds Family
- Natasha Ratuva, *Waitui e loma ni drauniluqu: Ocean in my hair*, 2023, natural pigments (soot, charcoal, Indian ink) on masi (barkcloth) from Vatulele Island, Fiji. 506 x 600 mm (h x w), purchased from the artist (was displayed in the exhibition Buiniga held at Aratoi 11 November 2023 - 18 February 2024)

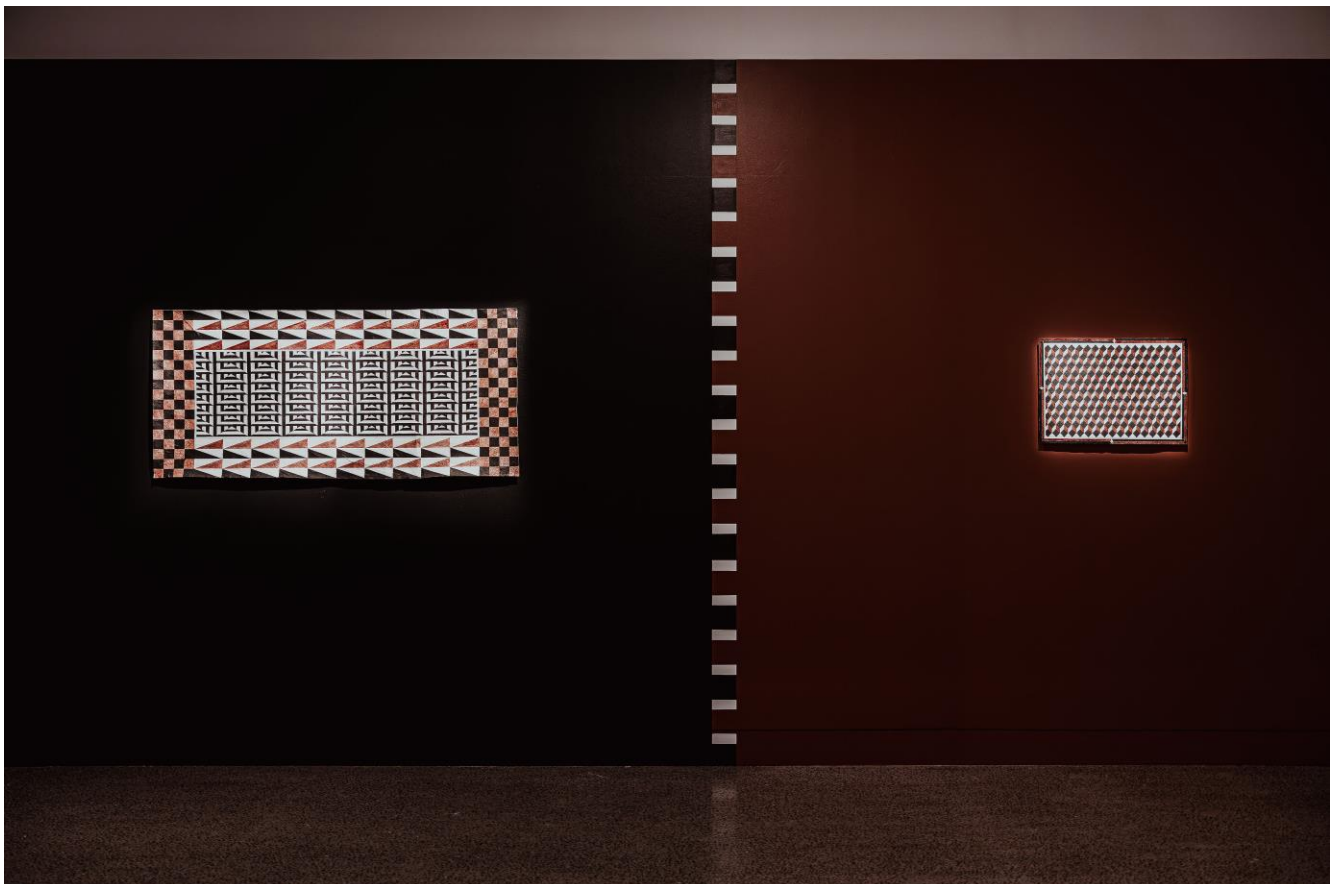
The following was approved for deaccession:

- James Moore Coradine (1861-1933) fob watch, c.1919, gold, enamel face, Accession no.: 2008.007.001. In 2008 it was donated the watch to Aratoi, but the documentation was incomplete and in 2011 the donor reconsidered the gift and it was given back. It has now been formally removed from the collection database.

SERVICE TWO – EXHIBITIONS

We will tell our history and stories and connect with our communities. We will be a community forum for learning, understanding and participation in art, history and culture.

During 2023 - 24, Aratoi delivered a total of 29 exhibitions as well as a number of smaller displays. The programme included exhibitions of Taonga Māori, social history, art, craft, photography, ceramics, with a number of large-scale in-house developed exhibitions including *Light and Space: Sculpture from the collection*, *In Recognition*, and *Thresholds*. This year also saw us host the incredibly popular touring exhibitions *Rita Angus: New Zealand Modernist* from Te Papa, and *Our Moon: Then, Now and Beyond* from Nelson Provincial Museum. Aratoi also staged important solo exhibitions of artists such as Lisa Chandler, Dwayne Duthie, Rebecca Steedman, Jane Sinclair and Natasha Ratuva. The exhibitions were supported by a stimulating and diverse programme of openings, floor talks and activities.



#	Date	Exhibition	Classification
1	2022 – 26/10/23	Waipupū Waka	Taonga Māori, history
2	20/05 – 16/07/23	Our Moon: Then, Now & Beyond	History, Art (international), Science
3	27/05 – 9/07/23	Carol Ann Bauer: Have the most fun you can before they make you stop	Art (local)
4	17/06 – 17/09/23	Rebecca Steedman: Time Beds	Art (national), Craft, Science
5	17/06 – 26/11/23	Light and Space: Sculpture from the collection	Art (local), Art (national), Collection
6	15/07 – 27/08/23	Jenny Keate: Looking Sideways	Art (national), Art (local), Education
7	15/07/23 – 18/02/24	Choice: Staff picks from the collection	Social History, Natural History, Collection
8	29/07 – 29/10/23	Wairarapa Camera Club: Reflecting on Our Place	Art (local)
9	26/08 – 10/09/23	The Wairarapa Embroiderers Guild: Knot Just Threads	Art (local), Craft
10	02/09 – 03/12/23	Rebekah Farr: O Deluge, Stop Singing, We're Drowning	Art (local)
11	23/09 – 22/10/23	Breadcraft Wairarapa Schools Art	Art (local), Education
12	30/09 – 26/10/23	Rita Angus: New Zealand Modernist	Art (national)
13	28/10 – 02/12/23	Dwayne Duthie: Double Edge Sword	Art (national), Art (Māori)
14	11/11/23 – 18/02/24	Natasha Ratuva: Buiniga	Art (local), Art (Pacific)
15	09/12/23 – 18/02/24	Kathy Bartlett: Tea Light Lunches	Art (local)
16	09/12/23 – 10/03/24	Tatyana Kulida: Wairarapa Felt	Art (local)
17	09/12/23 – 10/03/24	Leanne Sheather: Handle with Care	Art (national)
18	09/12/23 – 10/03/24	Madison Edmond: The River Sees	Art (international)
19	15/12/23 – 18/02/24	New Zealand Sotheby's International Realty Wairarapa Art Review	Art (local)
20	24/02 – 05/05/24	James Bragge: Splendid Scenic Gems	Social History, Art (local), Collection
21	24/02 – 14/04/24	Lester Blair: Twenty Four Churches	Art (local)
22	02/03 – 26/05/24	King Street Artworks	Art (local), Community
23	23/03 – 19/05/24	Lisa Chandler: Landscape of Loss	Art (National)
24	24/02 – 05/05/24	James Bragge: Splendid Scenic Gems	Art (local), Collection
25	20/04 – 16/06/24	Jane Sinclair: Quiet Observations	Art (local)
26	11/05 – 28/07/24	In Recognition	Social History (local), Taonga Māori, Collection
27	11/05 – 28/07/24	Whiriwhiri: Taonga from the collection	Taonga Taonga Māori, Collection
28	1/06 – 28/07/24	Thresholds	Art (local, national) Toi Māori, Collection
29	01/06 – 08/09/24	Pastimes: Games and Toys	Social History (local, national and international)
30	22/06 – 18/08/24	Jacky Pearson: Going with the Flow	Art (local)
31	2023-2024	Various collection exhibitions on the foyer wall	Art (local, national) Collection

Events and exhibition programmes

- **Winter School Holiday Programme**, 1-16 July 2023
- **A Starry Night - Matariki Music for Flute and Harp** (members of NZSO) 12 July 2023
- **Yoga Under The Moon: Evening Session**, 13 July 2023
- **Jenny Keate: Looking Sideways**, artist talk, 15 July 2023
- **Wairarapa Camera Club: Reflecting on Our Place**, opening, 29 July 2023
- **Field Trip: Wai-āwangawanga, The Anxious River** (in response to Rebecca Steedman's exhibition), 19 August 2023
- **Embroiderers Guild Awards presentation**, 25 August 2023
- **Rebekah Farr: Artist Talk**, 2 September 2023
- **Talk: Ngā Toka o Te Awa, The Rocks in the River** (in response to Rebecca Steedman's exhibition), 16 September 2023
- **Breadcraft Wairarapa Schools Art**, exhibition opening, 23 September 2023
- **Rita Angus/Spring season opening**, 29 September 2023
- **Rita Angus talk with curator Lizzie Bisley**, 30 September 2023
- **Trust House tour of gallery/collection store**, 2 October 2023
- **Singing with Rita**, 6 October 2023
- **Book Launch: In the Temple**, 13 October 2023
- **Rita Angus exhibition tour**, for the Ranfurly Club, 19 October 2023
- **Taeko Ogawa calligraphy demonstration with Caitlin Morris on cello**, 26 October 2023
- **Dwayne Duthie: Double Edge Sword**, opening 27 October 2023
- **Dwayne Duthie: Double Edge Sword**, artist talk, 28 October 2023
- **Cabinet of Dr Caligari film screening**, 31 October 2023. organised by MDC with Goethe-Institut New Zealand
- **Lion's Club Peace Poster Prizegiving**, 9 November 2023
- **Friends Sneak Peek**, 9 November 2023
- **Natasha Ratuva: Buiniga**, opening day events, 11 November 2023
- **Rotary talk and tour of Rita Angus**, 14 November 2023
- **Lea-Anne Sheather: Artist Talk**, 9 December 2023
- **Kathy Bartlett: Teas Light Lunches Opening**, 9 December 2023
- **Wairarapa Art Review and Summer season opening**, 15 December 2023
- **Tatyana Kulida: Artist Talk**, 16 December 2023
- **Madison Emond: Artist Talk**, 16 December 2023

- **Arts Quarter evening**, 20 December 2023
- **Painting a Still Life: Tatyana Kulida Demonstration**, 20 January 2024
- **WCM Legal taonga handover**, 29 January 2024
- **Kathy Bartlett: Artist Talk**, 10 February 2024
- **Presentation of Sam Te Tau's portrait of Tikawenga Te Tau** (on long term loan to the collection) 10 February 2024
- **Natasha Ratuva: Buiniga closing talks/events**, 17 February 2024
- **New Zealand Sotheby's International Realty Wairarapa Art Review People's Choice Announcement**, 18 February 2024
- **Lester Blair: Artist Talk**, 24 February 2024
- **Friends of the New Zealand Portrait Gallery exhibition tour**, 29 February 2024
- **King Street Artworks**, opening talks, 2 March 2024
- **Pop Up Museum talk**, Featherston Library, 18 February 2024
- **Rangitāne tour of Collection Store**, 22 March 2024
- **Autumn exhibitions opening**, 22 March 2024
- **Lisa Chandler artist and curator talk**, 23 March 2024
- **Jane Sinclair: Quiet Observations**, opening event, 19 April 2024
- **Jane Sinclair: Quiet Observations**, artist talk, 20 April 2024
- **Wairarapa Film Festival: A State of Siege**, film screening, 26 May 2024
- **Winter exhibitions opening**, 31 May 2024
- **Jane Sinclair painting demonstration**, 1 June and 8 June 2024
- **Pop-Up Museum talk**, Greytown Library 10 June 2024
- **Madeleine Slavick 'Town' book tour**, 11 June 2024
- **Jacky Pearson**, Windows Gallery, talk and opening 22 June 2024



SERVICE THREE – ACCESS & ENGAGEMENT

We will partner and engage with Wairarapa communities. We will be a valued community resource. We will encourage dialogue and interaction onsite, offsite and online.

Museums enrich our lives and support our well-being. Aratoi continues to offer an education programme to Wairarapa schools and education providers free of charge. The programme has a strong focus on tīkanga Māori, the Aratoi collection and current exhibitions and is made possible thanks to grants from Masterton Trust Lands Trust, the Steadfast Foundation, and a 3-year ELC contract (Enriching Local Curriculum) with the Ministry of Education.

Aratoi with its education programme helps Wairarapa students connect, engage and develop their creativity through positive, fun and interactive experiences. Education activities alone have drawn over 4000 participants to Aratoi. Educational initiatives, such as craft activities for families, and interactive family focused play spaces have helped reach out to our community.



Our regular newspaper articles, monthly radio programme on Arrow FM and active social media channels continue to engage and highlight the success achieved by Aratoi and the vast network of creative people who live and create in the Wairarapa. With the launch of the collection online our taonga, art and stories are more accessible to the public than ever.

ARATOI IN NUMBERS

3.9	FTE (full-time equivalent staff)
30+	exhibitions and displays during 2023-24
35%	self-generated revenue
23	items donated to, or acquired for the collection
3860+	volunteer hours donated by Trustees, Friends and Aratoi Volunteers
4000+	participating in our free educational activities
74,250	visitation baseline for 2023-24



OUR PEOPLE

ARATOI REGIONAL TRUST BOARD

Chair	Wayne Skipage
Deputy Chair	Elizabeth Johnston
Board Members	Wayne Skipage
	Elizabeth Johnston
	Victoria Shaw
	Te Rangikaiwhiria (Clayton) Reiri
	Dany Haira
	David Moriarty
	Robin Dunlop
	Mike Hollings

ARATOI PATRONS' TRUST

Chair	Michelle Williams
Trust Board representative	David Moriarty
Members	Barbara Morris
	Paul Armstrong
	Briar Toop

FRIENDS OF ARATOI

Chair	Sandra Debney
Deputy Chair	Rob Sewell
Treasurer	Robyn Cornford
Secretary	Tess Mills
Committee	Sandra Debney
	Rob Sewell
	Robyn Cornford
	Tess Mills
	Jo Nelson
	Marilyn Hunt
	Kathryn Seagrave
	Debra Britten
	Felicity Powell
	Marguerite Tait-Jamieson
	Donna Prendergast

ARATOI STAFF*

Director	Sarah McClintock
Business Manager	Georgie Vincent
Collection Curator	Jo Torr
Public Programmes and Communication Manager	Becky Bateman
Educators	Natasha Priddle
Visitor Services/Retail Manager	Anthea Birch
Visitor Services & Photography	Lynda Feringa

* Apart from the Director, all Aratoi staff are part-time

ACKNOWLEDGMENTS

Aratoi Regional Trust would like to thank the following people and organisations for their support during the financial year 2023-24:

- Masterton District Council
- Masterton Trust Lands Trust
- Trust House Foundation
- Friends of Aratoi
- Aratoi Volunteers
- Ngāti Kahungunu ki Wairarapa
- Rangitāne o Wairarapa
- Provincial Insurance Brokers
- Transit Group
- Steadfast Foundation
- Geoff Francis & Goodeye
- Hau Kainga
- REAP Wairarapa
- Carterton District Council
- Breadcraft Wairarapa
- Urlar Gladstone
- Hedleys Booksellers
- Ohnyx
- Deco Precasters
- Wairarapa Archive
- Gareth Winter
- Adam West Watson
- Ministry of Education
- Arrow FM
- Museum of New Zealand Te Papa Tongarewa
- Cobblestones
- Mike Kawana
- Haami Te Whaiti
- Makuini Kerehi
- Suni Brown
- Aotea Utanganui - Museum of South Taranaki
- Te Manawa Museum of Art, Science & Heritage
- National Library of New Zealand
- John Heginbotham
- Hamish McKay Gallery, Wellington
- McLeavey Gallery, Wellington
- Mark Pacey
- Matt Head
- Mike Birch
- Lucy Cooper
- Helen Southey
- Judy Evans
- Kathryn Fletcher
- Leanne Gibson
- Melia Slight
- Helen Winterbottom
- Bruce Vincent
- The Lloyd Family
- Rachel Burt
- Richter City Roller Derby
- The Bateman family
- Chris Hollis
- Wairarapa Library Services
- Harrisons
- Tararua Builders Ltd

Image credit:

Cover: Opening of Natasha Ratuva: Buiniga **P.4** Opening of the Wairarapa Art Review | **P.5:** Visitors at the opening of Pastimes: Games and Toys | **P.6:** Left: Choice: Staff Picks from the Collection; Right: In Recognition | **P.7:** Left: Sarah McClintock and Natasha Priddle at the opening of Breadcraft Schools Art Exhibition; Right: Visitors at the opening of Pastimes: Games and Toys | **P.8:** The Aratoi retails space | **P.9:** David Moriarty | **P.10:** Repatriation of waka tiwai to Aotea Utanganui - Museum of South Taranaki | **P.11:** Left: Light and Space: Sculpture from the Collection; Right: Museum Pop-Up at Featherston Library | **P.14:** *Natasha Ratuva: Buiniga* (photo: Saint Andrew Matautia) | **P.17:** Left: Jane Sinclair painting demonstration; Right: Wairarapa Camera Club talk | **P.18:** Opening of Breadcraft Schools Art Exhibition | **P.19** Sarah McClintock, Te Papa Chief Executive Courtney Johnston and Aratoi Patron Dame Robin White at the opening of Rita Angus: New Zealand Modernist | All images Lynda Feringa/Aratoi unless otherwise stated.